

Meet

DINO 190XTE

DINO® TRAILER MOUNTED MEWPs

Standard features in DINO 190XTE:

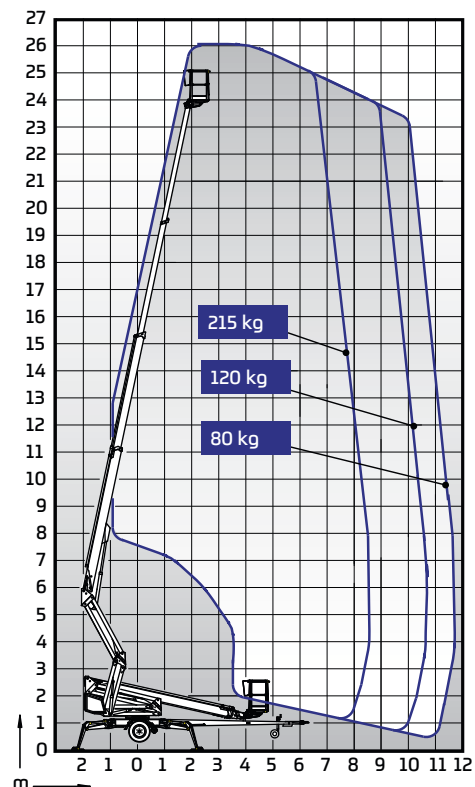
- Driving system; easy to move at work site
- Spacious, easy-entry, aluminum basket 0.8 x 1.8 m, capacity 250 kg
- Hydraulic basket rotation 180°
- Lifting point underneath the basket enabling material lifting up to 250 kg
- Continuous rotation of the boom; easy and functional
- Large outrigger pads 280 x 360 mm
- Stable to tow
- Simple to use, clear and informative controls



Options available for DINO 190XTE:

- Petrol power pack 3.7 kW
- Cable steering for driving
- Two joystick controls
- Outrigger support indicator
- Automatic levelling
- LED working lights
- Extra outrigger pads 500 x 500 x 35 mm + bracket
- Lockable tool / harness box
- Rack for tools and accessories
- DINO SafeGuard secondary guarding
- Spare wheel

Technical data	190XTE
Max. working height	18.40 m
Max. platform height	16.40 m
Max. outreach	7.3 m / 250 kg 9.3 m / 120 kg
Support width	3.9 / 4.3 m
Basket capacity	250 kg
Basket size	0.8 x 1.8 m
Boom rotation	continuous
Basket rotation	±180° hyd.
Boom control	proport.
Transport length	7.48 m
Transport width	1.95 m
Transport height	2.46 m
Weight	2400 kg
Power source	230 VAC 2.2 kW / Power pack 3.7 kW (option)
AC socket in the basket x 2	std
Basket load sensor	std
Automatic leveling	opt.
Gradeability	25 %



DINOLIFT

UP TO THE JOB

DINOLIFT Oy | Raikkolantie 145 • FI-32210 LOIMAA, FINLAND

Tel: +358 (0)20 1772 400 • E-mail: info@dinolift.com

Read more: www.dinolift.com

Technical specifications are subject to change without prior notice.

©Dinolift Oy | 23.5.2017